

Intelligent society: Contribution of ICT to sustainable development for the Society and the Planet

Philippe Araujo

SME Sustainable ICT for Fujitsu North America

Leader North-America Sustainable ICT community

ISEB Green IT foundation certified

Fujitsu Canada

FUJITSU and Sustainability

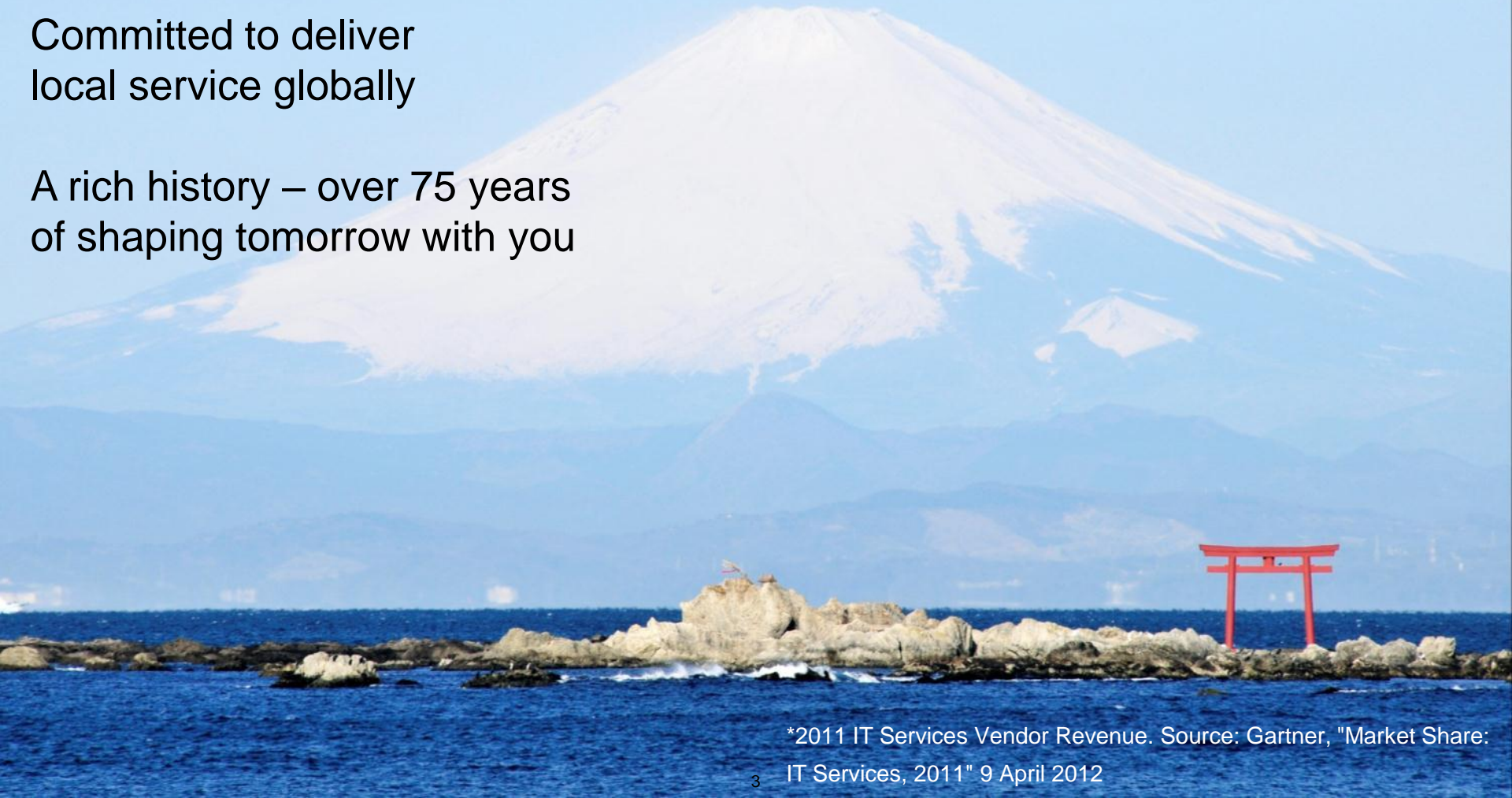
One of the world's biggest



The Japanese global ICT company –
the world's third-largest IT services
provider and No.1 in Japan*

Committed to deliver
local service globally

A rich history – over 75 years
of shaping tomorrow with you

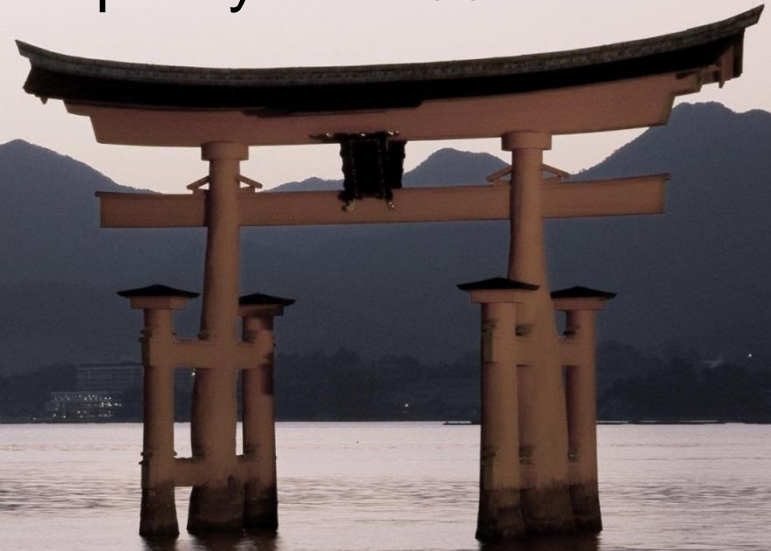


*2011 IT Services Vendor Revenue. Source: Gartner, "Market Share:

IT Services, 2011" 9 April 2012

At a glance

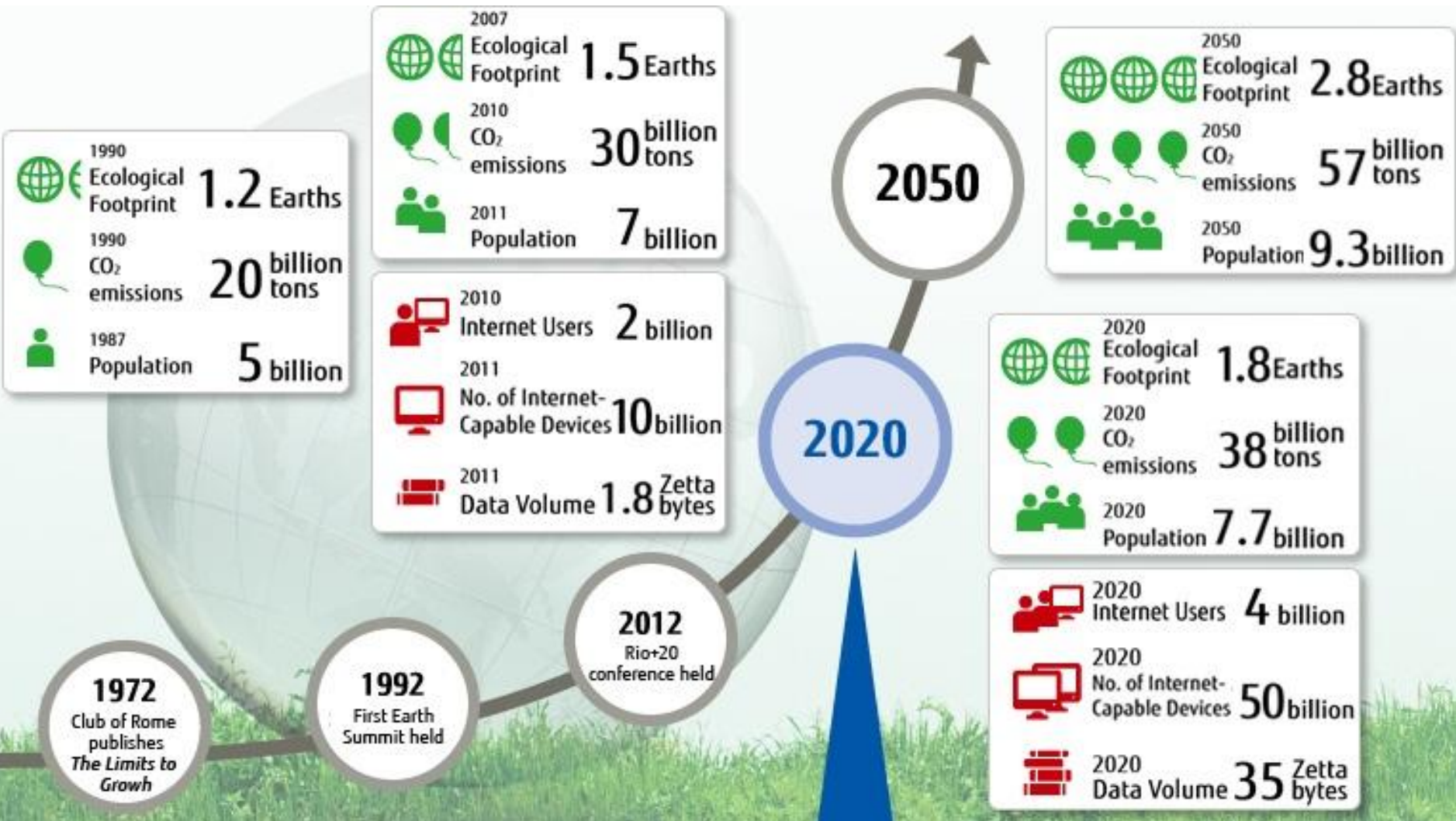
- Long history of sustainability dating back to 1938
- Long term view with environmental policy to 2100



- Commitments to reduce our customers emissions, by 30m tons of GHG until 2020
- History of strong environmental reform
- Recognized leader globally

Our future, our vision

Key Considerations



Human Centric Intelligent Society

Contributing to the sustainable development of society and realizing societies where people can live with peace of mind



Shaping the future of ICT

The role of ICT is twofold

- Sustainable efficiency of ICT – reducing the 3% of global GHG emissions by improving ICT efficiency
- Sustainable efficiency by ICT – using ICT to help reduce 97% of global GHG emissions, outside the ICT industry



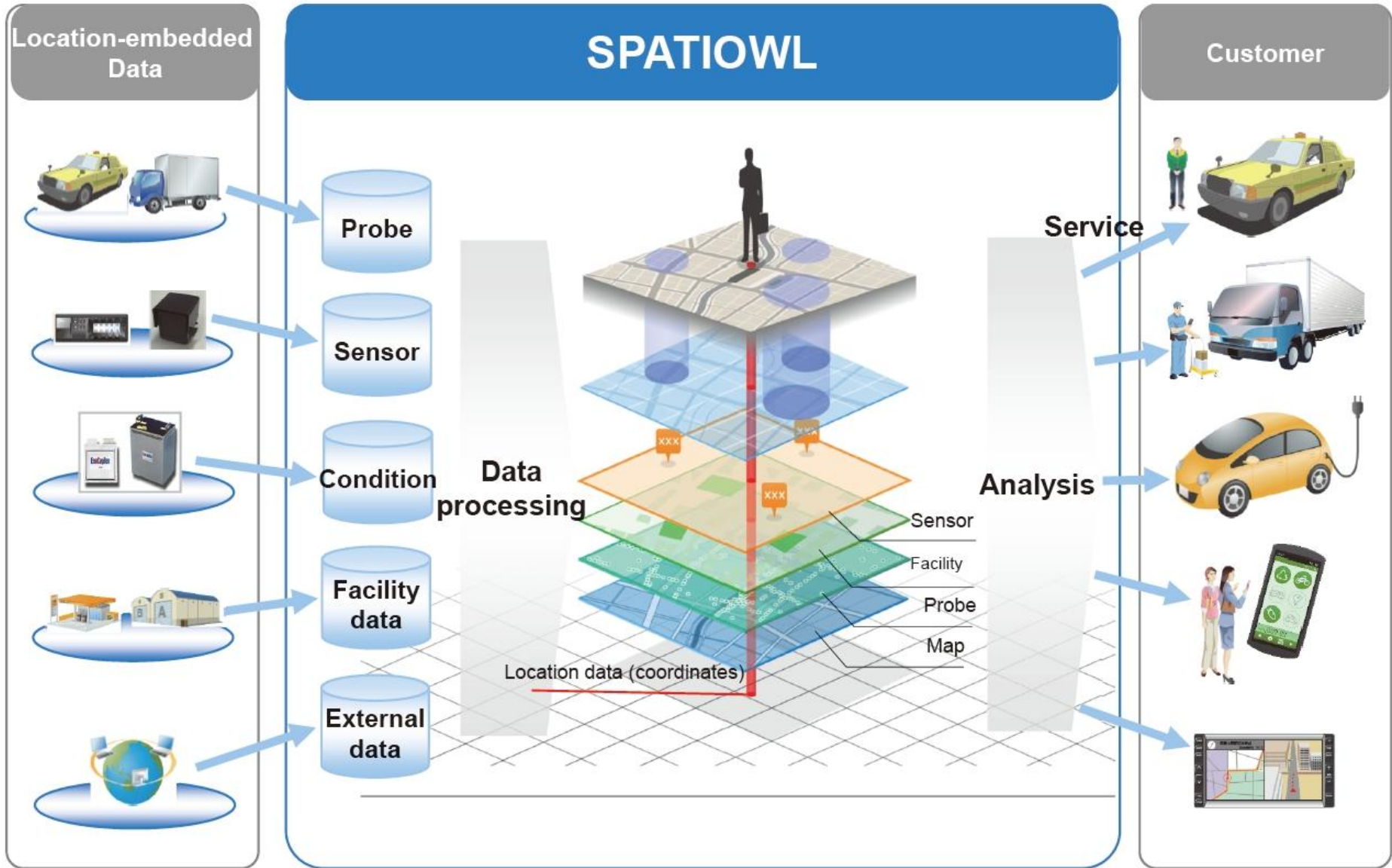
Shaping the future by ICT

Smart Transport

A cloud-based intelligent traffic management system collects masses of data - from an incredibly rich variety of sources. From sensors planted in fleets of vehicles & roadside infrastructure that monitors traffic flow



SpatiOWL Concept

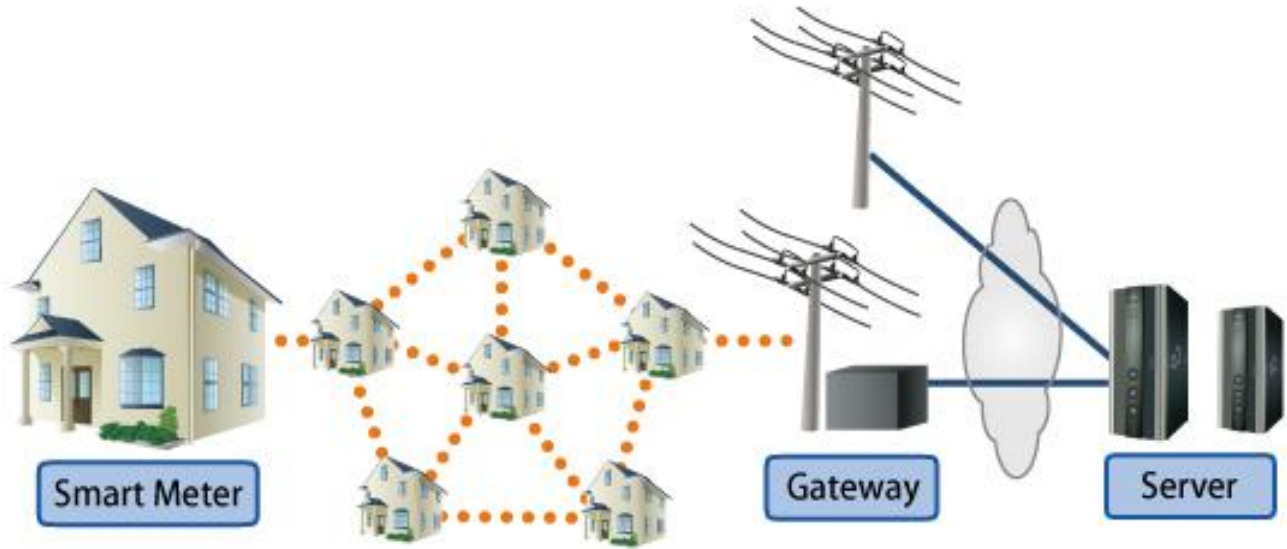
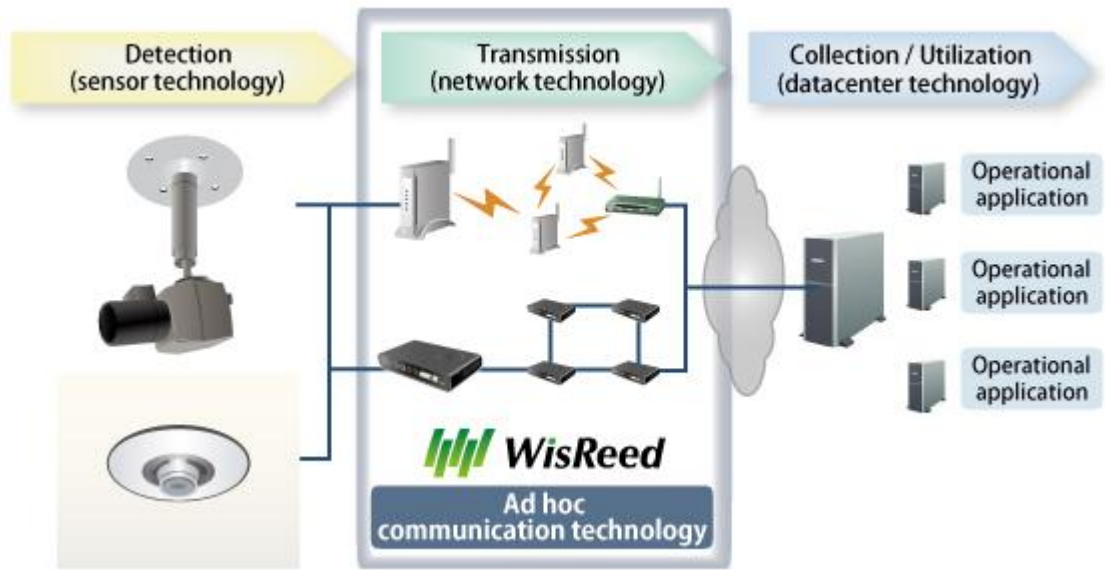


Smart Grid

This set of technologies is enabling a company to consolidate its existing business (reduce costs), transform to a new business model (demand pricing) and enter a new area of business (innovation)



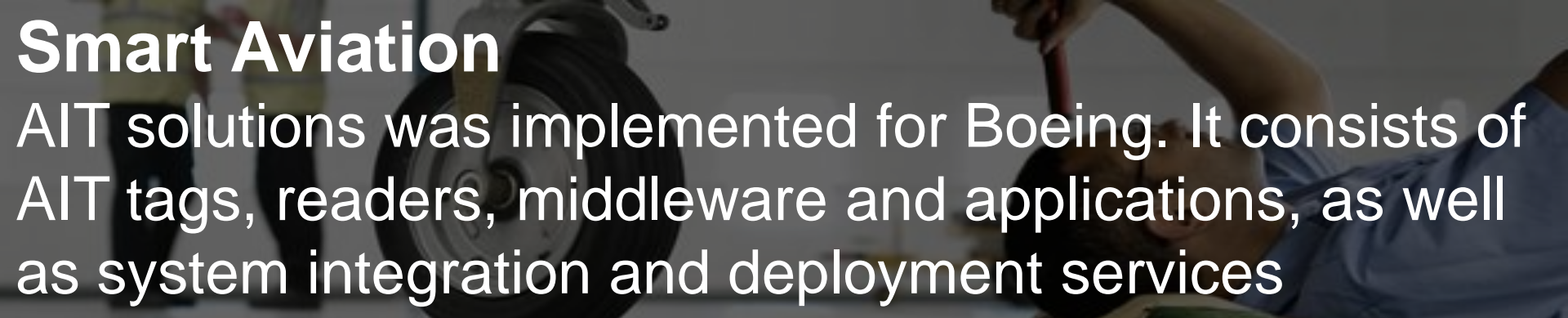
Smart Grid approach with WisReed



Smart Building

Fibre-based IP building network infrastructure integrating multiple services including lighting control, air-conditioning and energy monitoring via Cloud Hosting





Smart Aviation

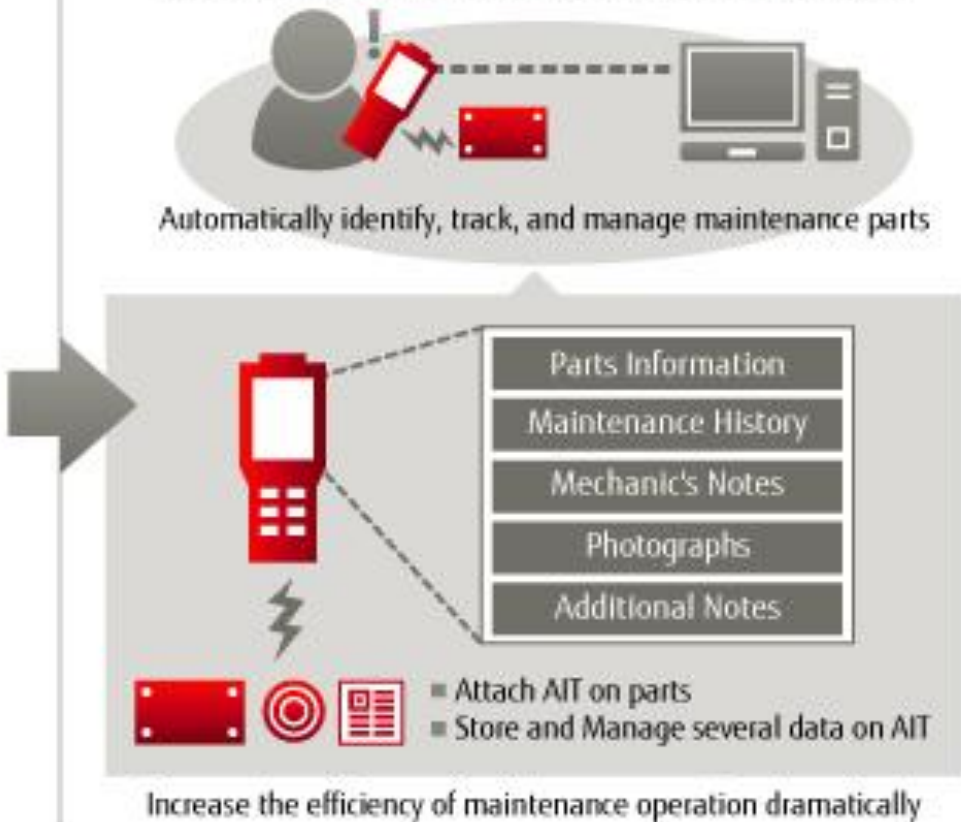
AIT solutions was implemented for Boeing. It consists of AIT tags, readers, middleware and applications, as well as system integration and deployment services

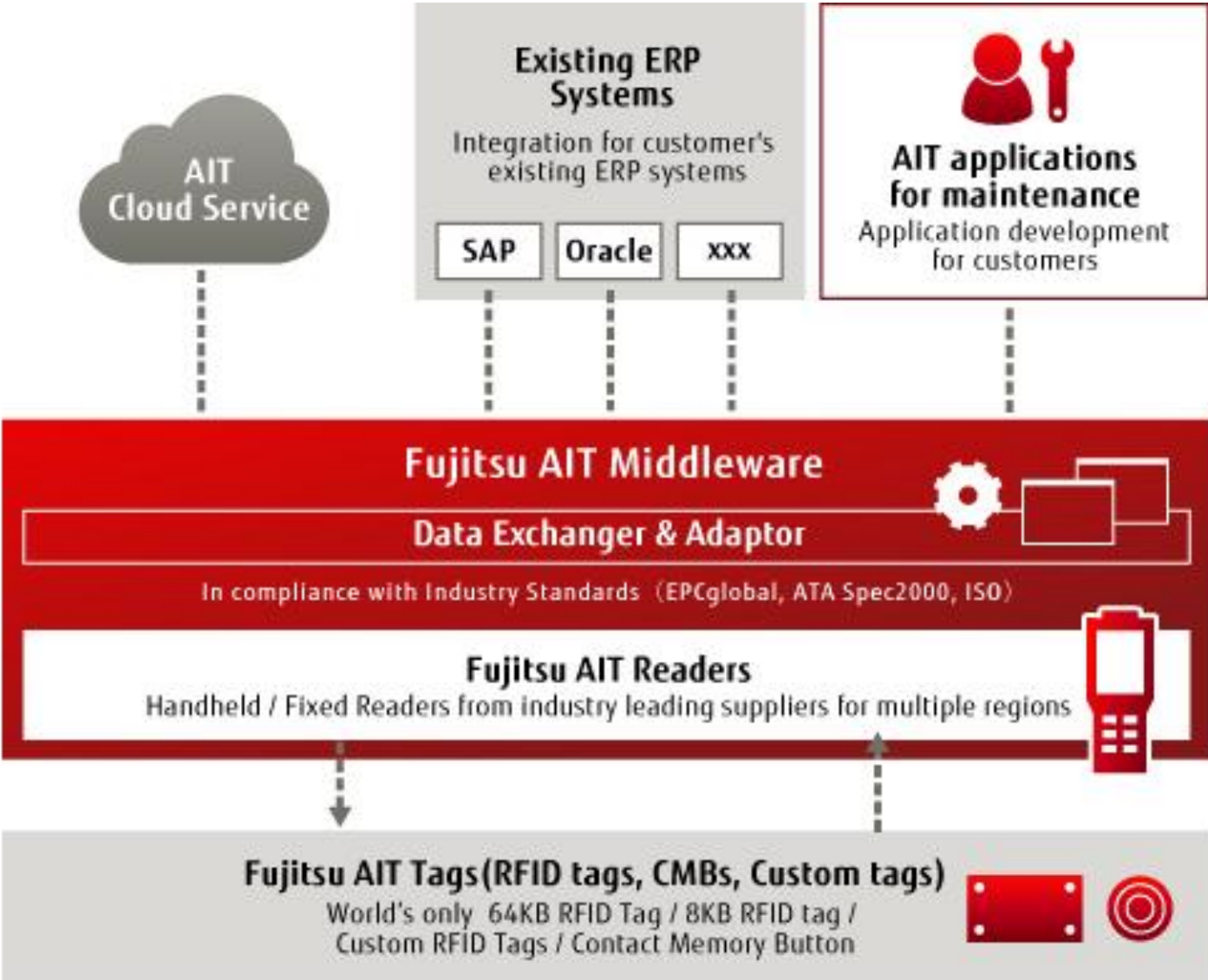


Current Maintenance Operation



Maintenance Operation with AIT Solutions



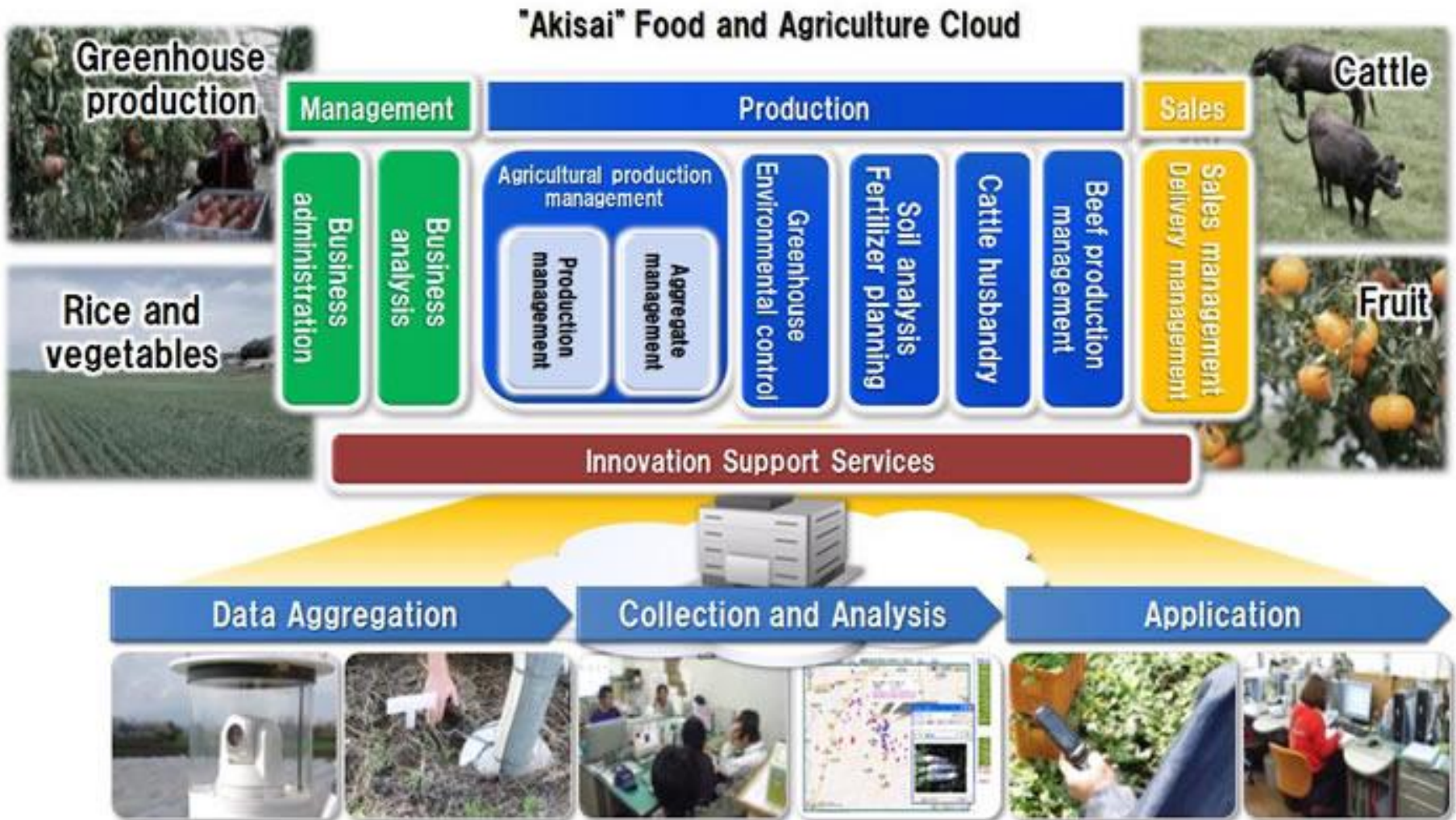


Smart Agriculture

AKISAI a cloud-based platform to improve management of Japan's food and agriculture industries

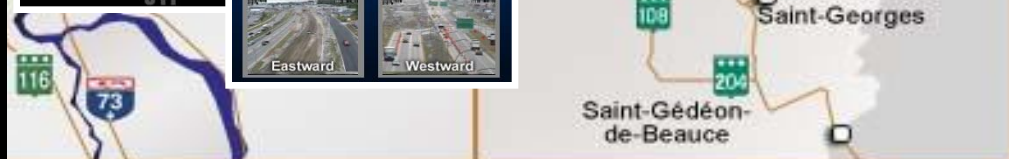
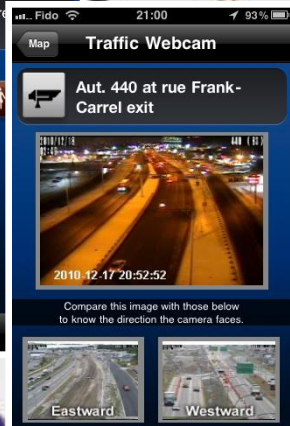
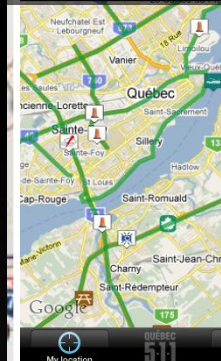
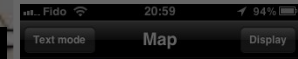


Smart Agriculture Akisai

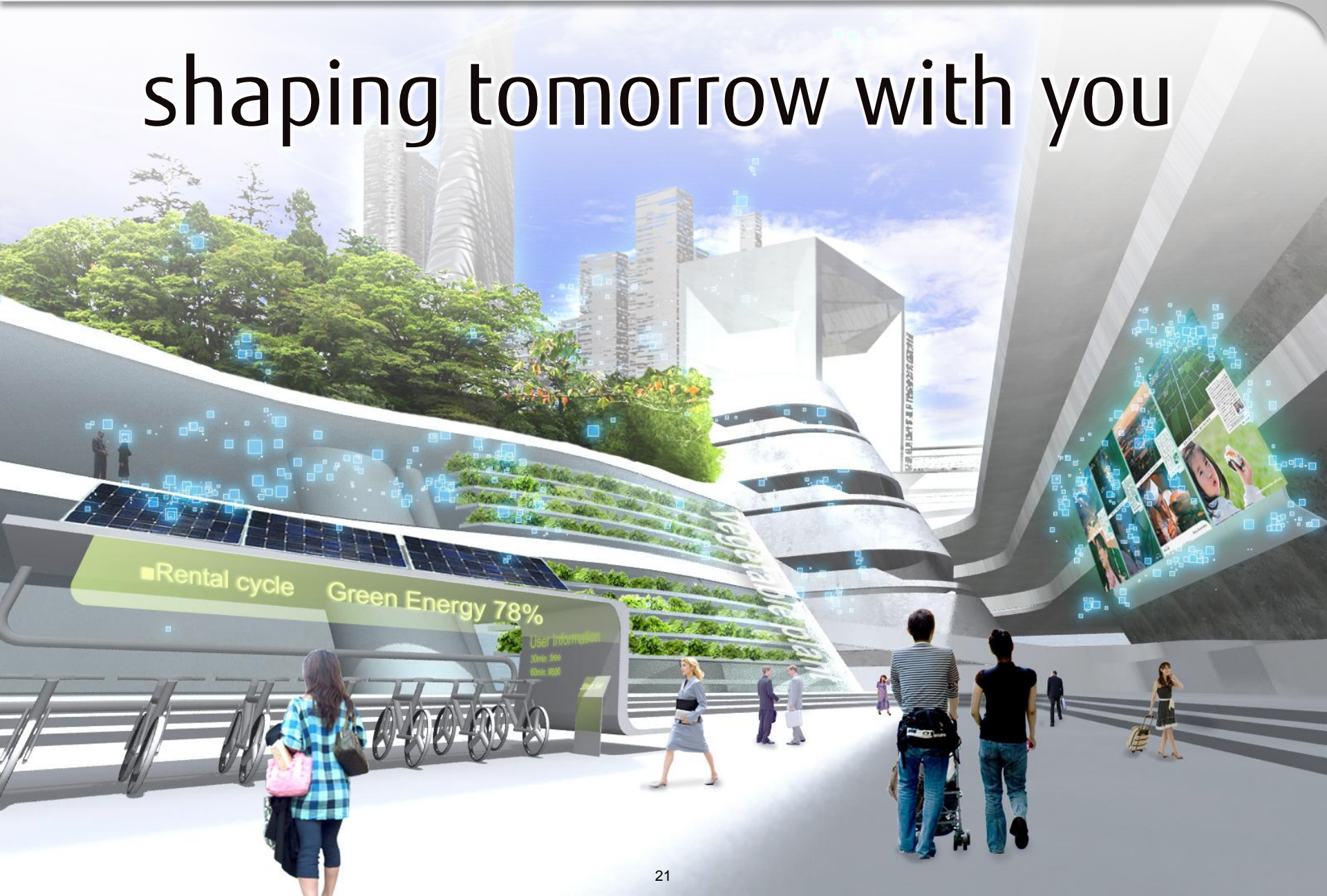


Smart transportation

Free mobile services that gives the road network conditions online for your specific itinerary or through cameras

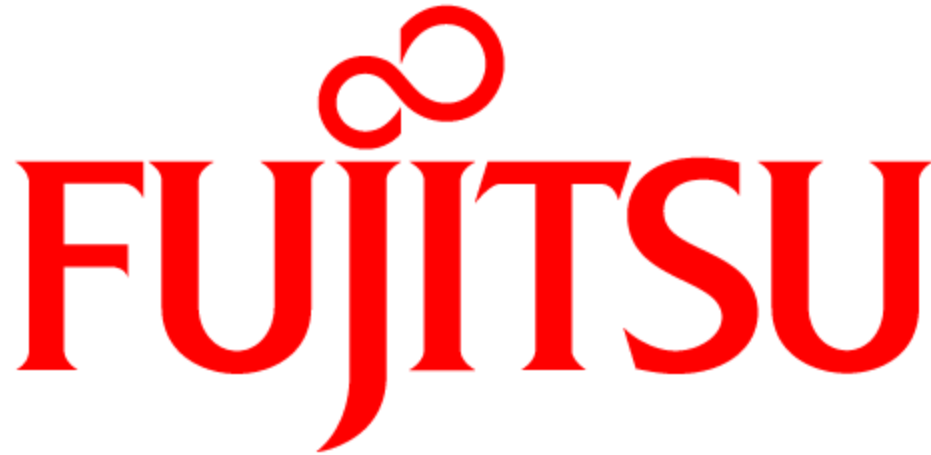


shaping tomorrow with you



shaping tomorrow with you

社会とお客様の豊かな未来のために

The Fujitsu logo consists of a red infinity symbol (∞) positioned above the word "FUJITSU" in a bold, red, serif typeface. The infinity symbol is centered and its top loop is slightly larger than the bottom loop.

FUJITSU

façonnons l'avenir ensemble