

PROGRAMS

INFORMATION TECHNOLOGY

JOINT ACCREDITATION WITH ENS DE LYON AND PARTNER UNIVERSITIES

<http://www.ens-lyon.fr/DI/>

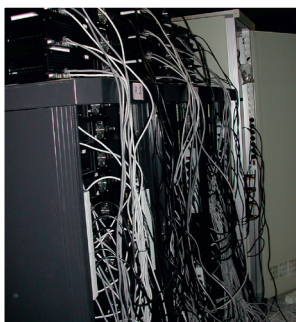
EXCELLENT RESEARCHED BASED TRAINING AND TRAINING THROUGH RESEARCH, WITH AN INTERNATIONAL FOCUS INCLUDING INTERNSHIPS OR SIX-MONTH STUDY PERIODS ABROAD

The IT program of the ENS de Lyon enables students to acquire a strong general culture in Information Technology.

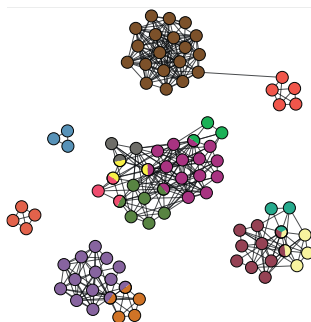
For 20 years, this course has been closely linked to fields of expertise of the LIP: the IT Parallelism Laboratory (UMR 5668 | CNRS – ENS de Lyon – Université Claude-Bernard Lyon 1 – INRIA).

The program features a wide range of research initiation internships in the best academic and industrial laboratories in France or abroad.

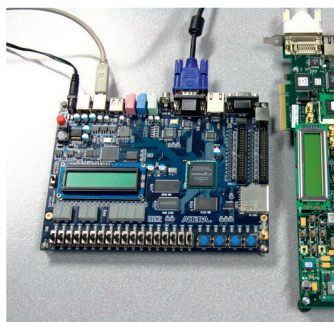
Every student benefits from personalized tutoring, an intensive training program in scientific English as well as many scientific seminars.



Computing Grid, Input/output side



Facebook Community model



Reconfigurable processors

Proof Session	Status	Time	Code
triangle.mlw	✓		1750 constant o11 : double
triangle.mlw	✓		1751 constant o11 : double
triangle.mlw	✓		1752 constant o11 : double
triangle.mlw	✓		1753 constant o11 : double
triangle.mlw	✓		1754 constant o11 : double
triangle.mlw	✓		1755 constant o11 : double
triangle.mlw	✓		1756 constant o11 : double
triangle.mlw	✓		1757 constant o11 : double
triangle.mlw	✓		1758 constant o11 : double
triangle.mlw	✓		1759 constant o11 : double
triangle.mlw	✓		1760 constant o11 : double
triangle.mlw	✓		1761 constant o11 : double
triangle.mlw	✓		1762 constant o11 : double
triangle.mlw	✓		1763 constant o11 : double
triangle.mlw	✓		1764 constant o11 : double
triangle.mlw	✓		1765 constant o11 : double
triangle.mlw	✓		1766 constant o11 : double
triangle.mlw	✓		1767 constant o11 : double
triangle.mlw	✓		1768 constant o11 : double
triangle.mlw	✓		1769 constant o11 : double
triangle.mlw	✓		1770 constant o11 : double
triangle.mlw	✓		1771 constant o11 : double
triangle.mlw	✓		1772 constant o11 : double
triangle.mlw	✓		1773 constant o11 : double
triangle.mlw	✓		1774 constant o11 : double
triangle.mlw	✓		1775 constant o11 : double
triangle.mlw	✓		1776 constant o11 : double
triangle.mlw	✓		1777 constant o11 : double
triangle.mlw	✓		1778 constant o11 : double
triangle.mlw	✓		1779 constant o11 : double
triangle.mlw	✓		1780 constant o11 : double
triangle.mlw	✓		1781 constant o11 : double
triangle.mlw	✓		1782 constant o11 : double
triangle.mlw	✓		1783 constant o11 : double
triangle.mlw	✓		1784 constant o11 : double
triangle.mlw	✓		1785 constant o11 : double
triangle.mlw	✓		1786 constant o11 : double
triangle.mlw	✓		1787 constant o11 : double
triangle.mlw	✓		1788 constant o11 : double
triangle.mlw	✓		1789 constant o11 : double
triangle.mlw	✓		1790 constant o11 : double
triangle.mlw	✓		1791 constant o11 : double
triangle.mlw	✓		1792 constant o11 : double
triangle.mlw	✓		1793 constant o11 : double
triangle.mlw	✓		1794 constant o11 : double
triangle.mlw	✓		1795 constant o11 : double
triangle.mlw	✓		1796 constant o11 : double
triangle.mlw	✓		1797 constant o11 : double
triangle.mlw	✓		1798 constant o11 : double
triangle.mlw	✓		1799 constant o11 : double
triangle.mlw	✓		1800 constant o11 : double
triangle.mlw	✓		1801 constant o11 : double
triangle.mlw	✓		1802 constant o11 : double
triangle.mlw	✓		1803 constant o11 : double
triangle.mlw	✓		1804 constant o11 : double
triangle.mlw	✓		1805 constant o11 : double
triangle.mlw	✓		1806 constant o11 : double
triangle.mlw	✓		1807 constant o11 : double
triangle.mlw	✓		1808 constant o11 : double
triangle.mlw	✓		1809 constant o11 : double
triangle.mlw	✓		1810 constant o11 : double
triangle.mlw	✓		1811 constant o11 : double
triangle.mlw	✓		1812 constant o11 : double
triangle.mlw	✓		1813 constant o11 : double
triangle.mlw	✓		1814 constant o11 : double
triangle.mlw	✓		1815 constant o11 : double
triangle.mlw	✓		1816 constant o11 : double
triangle.mlw	✓		1817 constant o11 : double
triangle.mlw	✓		1818 constant o11 : double
triangle.mlw	✓		1819 constant o11 : double
triangle.mlw	✓		1820 constant o11 : double
triangle.mlw	✓		1821 constant o11 : double
triangle.mlw	✓		1822 constant o11 : double
triangle.mlw	✓		1823 constant o11 : double
triangle.mlw	✓		1824 constant o11 : double
triangle.mlw	✓		1825 constant o11 : double
triangle.mlw	✓		1826 constant o11 : double
triangle.mlw	✓		1827 constant o11 : double
triangle.mlw	✓		1828 constant o11 : double
triangle.mlw	✓		1829 constant o11 : double
triangle.mlw	✓		1830 constant o11 : double
triangle.mlw	✓		1831 constant o11 : double
triangle.mlw	✓		1832 constant o11 : double
triangle.mlw	✓		1833 constant o11 : double
triangle.mlw	✓		1834 constant o11 : double
triangle.mlw	✓		1835 constant o11 : double
triangle.mlw	✓		1836 constant o11 : double
triangle.mlw	✓		1837 constant o11 : double
triangle.mlw	✓		1838 constant o11 : double
triangle.mlw	✓		1839 constant o11 : double
triangle.mlw	✓		1840 constant o11 : double
triangle.mlw	✓		1841 constant o11 : double
triangle.mlw	✓		1842 constant o11 : double
triangle.mlw	✓		1843 constant o11 : double
triangle.mlw	✓		1844 constant o11 : double
triangle.mlw	✓		1845 constant o11 : double
triangle.mlw	✓		1846 constant o11 : double
triangle.mlw	✓		1847 constant o11 : double
triangle.mlw	✓		1848 constant o11 : double
triangle.mlw	✓		1849 constant o11 : double
triangle.mlw	✓		1850 constant o11 : double
triangle.mlw	✓		1851 constant o11 : double
triangle.mlw	✓		1852 constant o11 : double
triangle.mlw	✓		1853 constant o11 : double
triangle.mlw	✓		1854 constant o11 : double
triangle.mlw	✓		1855 constant o11 : double
triangle.mlw	✓		1856 constant o11 : double
triangle.mlw	✓		1857 constant o11 : double
triangle.mlw	✓		1858 constant o11 : double
triangle.mlw	✓		1859 constant o11 : double
triangle.mlw	✓		1860 constant o11 : double
triangle.mlw	✓		1861 constant o11 : double
triangle.mlw	✓		1862 constant o11 : double
triangle.mlw	✓		1863 constant o11 : double
triangle.mlw	✓		1864 constant o11 : double
triangle.mlw	✓		1865 constant o11 : double
triangle.mlw	✓		1866 constant o11 : double
triangle.mlw	✓		1867 constant o11 : double
triangle.mlw	✓		1868 constant o11 : double
triangle.mlw	✓		1869 constant o11 : double
triangle.mlw	✓		1870 constant o11 : double
triangle.mlw	✓		1871 constant o11 : double
triangle.mlw	✓		1872 constant o11 : double
triangle.mlw	✓		1873 constant o11 : double
triangle.mlw	✓		1874 constant o11 : double
triangle.mlw	✓		1875 constant o11 : double
triangle.mlw	✓		1876 constant o11 : double
triangle.mlw	✓		1877 constant o11 : double
triangle.mlw	✓		1878 constant o11 : double
triangle.mlw	✓		1879 constant o11 : double
triangle.mlw	✓		1880 constant o11 : double
triangle.mlw	✓		1881 constant o11 : double
triangle.mlw	✓		1882 constant o11 : double
triangle.mlw	✓		1883 constant o11 : double
triangle.mlw	✓		1884 constant o11 : double
triangle.mlw	✓		1885 constant o11 : double
triangle.mlw	✓		1886 constant o11 : double
triangle.mlw	✓		1887 constant o11 : double
triangle.mlw	✓		1888 constant o11 : double
triangle.mlw	✓		1889 constant o11 : double
triangle.mlw	✓		1890 constant o11 : double
triangle.mlw	✓		1891 constant o11 : double
triangle.mlw	✓		1892 constant o11 : double
triangle.mlw	✓		1893 constant o11 : double
triangle.mlw	✓		1894 constant o11 : double
triangle.mlw	✓		1895 constant o11 : double
triangle.mlw	✓		1896 constant o11 : double
triangle.mlw	✓		1897 constant o11 : double
triangle.mlw	✓		1898 constant o11 : double
triangle.mlw	✓		1899 constant o11 : double
triangle.mlw	✓		1900 constant o11 : double

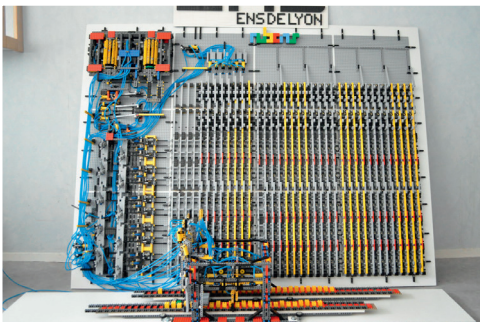
Proof of program

TRAINING OFFER

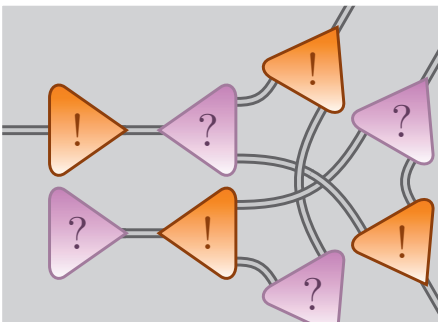
- **BACHELOR'S DEGREE (L3)**
2 study semesters including several projects and ending with a 6-week research internship
- **MASTER'S IN INFORMATION TECHNOLOGY** (Program in English)
 - **Master's 1 (M1)**
2 teaching terms including a project and a 3-month internship abroad or in a company
 - **Master's 2 (M2)**
Fundamental Information Technology program: 1 teaching semester and a 5-month internship. This Master's 2 features a "complex systems" orientation with a multi-disciplinary content in Physics, Biology, and Mathematics
- **FEAD&P COURSE**
Teaching Training, "Agrégation" in Mathematics and professional development option Information Technology

ADMISSION

ADMISSIONS THROUGH PUBLIC SELECTION PROCESS: Must be enrolled for the ENS de Lyon Diploma ENS PUPIL WITH CIVIL SERVANT STATUS	ADMISSIONS BASED ON STUDENT RECORDS FOR THE ENS DE LYON DIPLOMA ENS STUDENT STATUS	ADMISSIONS BASED ON STUDENT RECORDS FOR A MASTER'S NON-DEGREE SEEKING STUDENTS
<ul style="list-style-type: none">• 1st competitive entrance exam: for 3rd year degree course students (L3) or 1st year Master's student (if admitted in 2nd year of the diploma)• 2nd competitive entrance exam: university students having validated their final degree year (L3)	<ul style="list-style-type: none">• For final year degree students (L3) or 1st year Master's student (if admitted in 2nd year of the diploma)• Examination of the application for potential students by ENS de Lyon's admission commission• Criteria for selection: quality of the application, motivation and personal project of the candidate and relevance of this project to the content of the course	<ul style="list-style-type: none">• 1st year or 2nd year Master's• Examination of the application for potential students by ENS de Lyon's admission commission• Criteria for selection: quality of the application, motivation and personal project of the candidate and relevance of this project to the content of the course



Turing Machine in Lego, Student Project



Logic proof of a credit card



Extraction of cryptographic data

REGISTRATION PROCESS

INCLUDING INTERNATIONAL STUDENTS

www.ens-lyon.fr/formation/admission

FIND OUT MORE ABOUT THE PROGRAM

<http://www.ens-lyon.fr/DI/>

CAREER OPPORTUNITIES

- Researchers and teacher-researchers in information technology
- Engineers in Research and Development
- Managers in top academic establishments in France and abroad and in top industrial laboratories

CONTACT: ENS DE LYON
Director: Damien Stehlé
Assistant Director: Alain Tchana
Administrative Office: +33(0)4 72 72 84 64
<http://www.ens-lyon.fr/DI/>

Head of 1st year of the ENS de Lyon diploma:
Anne Benoît
Contact person for Master's 1: Daniel Hirschhoff
Contact person for Master's 2: Yves Robert

