

SFR BIOSCIENCES LYON



BOOST YOUR RESEARCH

WE OFFER FLEXIBLE ACCESS TO:

- + State-of-the-art equipment
- + Training
- + Service
- + Expert consultation
- + Laboratories

The quality management system of several facilities at the SFR Biosciences is certified ISO 9001 since 2014.

We are open to academics and private companies.

WHO ARE WE?

The SFR Biosciences was created from pooled resources provided by national institutions (INSERM, CNRS, ENS de Lyon, and Lyon 1 University) and local research institutes.

THE SFR BIOSCIENCES ALSO BENEFITS FROM EXTERNAL FUNDING BY:

- + La Métropole de Lyon
- + La Région Auvergne-Rhône-Alpes
- + L'Union Européenne
- + L'Agence Nationale de la Recherche (ANR), France 2030



ACCESS MODELS AND SERVICES

USE IT YOURSELF

Most of the equipment is available for use directly by the users themselves after initial training. This offers an efficient and cost-effective manner to access state-of-the-art equipment. Staff are always on hand to offer troubleshooting and advices.

FULL SERVICE

Our experienced staff will undertake the experiments for you. They will provide a full report containing data analysis.

COLLABORATION

If you plan to develop new technologies or implement new approaches, we strongly encourage collaborative partnerships between your research team and the facilities.

10 LIFE SCIENCE TECHNOLOGY PLATFORMS AT YOUR SERVICE

ANIMAL SCIENCE



ARTHROTOOLS



PRECI



AniRA
PBES



AniRA
L3

FROM CELL TO ORGANISM



PLATIM



AniRA
immOs



AniRA
CYTOMÉTRIE

GENETIC & CELLULAR TECHNOLOGIES



AniRA
AGC



AniRA
VECTOROLOGIE



IrradiateurX

PROTEIN SCIENCE



PSF

TECHNOLOGIES AVAILABLE

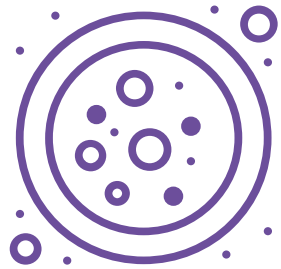
PROTEIN SCIENCE

- Peptide synthesis
- Protein production
- Structural studies
- Biophysical characterisation
- Proteomics



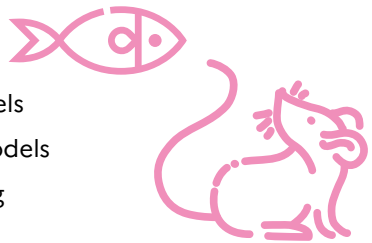
CELLULAR ANALYSIS

- Advanced light microscopy
- Flow cytometry & Cell sorting
- Immuno-phenotyping
- Metabolic analysis
- Lentivirus production
- Genetic and Cellular analysis
- X-Ray irradiation



MODEL ORGANISMS

- Arthropods, Fish and Mouse models
- Genetically engineered mouse models
- Cryopreservation and Genotyping



LABORATORIES

- BSL1, BSL2, BSL3 Animal facilities
- BSL1, BSL2, BSL3 laboratories
- BSL3 Insectarium facility
- Gnotobiotic animal facility
- Zebrafish facility



SFR BIOSCIENCES LYON IN SHORT

10

core facilities

40

dedicated
specialist staff

80

state-of-the-art
instruments

240

research teams using
our facilities per year



Since 1999, with the close support of 4 research and higher education institutions as well as the scientific expertise and partnership of 8 research institutes, we offer flexible access to cutting edge technologies, research services and laboratories. Our core facility expertise can benefit your research!

Yann Leverrier, PhD
SFR Biosciences Director

ACCESS

SFR BIOSCIENCES
Biodistrict Lyon Gerland
50 avenue Tony Garnier
69366 Lyon Cedex 07 - France



CONTACT

+33 4 37 28 74 70
secretariat.ums3444@inserm.fr



Unité de Service Inserm (US8)
Unité d'Appui et de Recherche CNRS (UAR 3444)



SFR-BIOSCIENCES.FR

